

THIS REPORT IS TO SUPERSEDE VERIFICATION REPORT NO. NGBEC1801116101

DATE:2018/05/14

Sample Name : Network Cabinet
SGS Job No. : NP18-000879 - NB
Tested Basic Model No. : RS
Client Ref. Information : RK、RW、RP
Date of Sample Received : 26 Mar 2018
Verification Period : 26 Mar 2018 - 14 May 2018
Verification Requested : With reference to RoHS Directive (EU) 2015/863 amending 2011/65/EU.
Verification Method : Please refer to next page(s).
Verification Result : Please refer to next page(s).
Verification Conclusion : Based on the verification results of the submitted samples, the results of Lead, Mercury, Cadmium, Hexavalent chromium, Polybrominated biphenyls (PBBs), Polybrominated diphenyl ethers (PBDEs) and Phthalates such as Bis(2-ethylhexyl) phthalate (DEHP) , Butyl benzyl phthalate (BBP), Dibutyl phthalate (DBP) , and Diisobutyl phthalate (DIBP) comply with the limits as set by RoHS Directive (EU) 2015/863 amending Annex II to Directive 2011/65/EU.
Note : The test results are related only to the tested items. The report shall not be reproduced except in full without the written approval of the testing laboratory.

Signed for and on behalf of
SGS-CSTC Standards Technical Services Co., Ltd. Ningbo Branch



Iris Xiao
Approved Signatory



Verification Method :

1. With reference to IEC 62321-2:2013, review was performed for the samples disjointed from the submitted articles.
2. With reference to IEC 62321-1:2013, tests were performed for the samples indicated by the photos in this report
 - (1) With reference to IEC 62321-3-1:2013, screening by EDXRF spectroscopy
 - (2) Wet chemical test method
 - a. With reference to IEC 62321-5:2013, determination of Cadmium by ICP-OES
 - b. With reference to IEC 62321-5:2013, determination of Lead by ICP-OES
 - c. With reference to IEC 62321-4:2013+A1:2017, determination of Mercury by ICP-OES
 - d. With reference to IEC 62321-7-1:2015, IEC 62321-7-2:2017 & ISO 17075-1:2017, determination of Hexavalent chromium by Colorimetric method using UV-Vis.
 - e. With reference to IEC 62321-6:2015, determination of PBBs and PBDEs by GC-MS
3. With reference to IEC 62321-8:2017 determination of phthalates by GC-MS.



In accordance with the result of material risk assessment, the following disjointed parts in the submitted sample have been verified.

Part No.	Part Description	Restricted Substances	Results of EDXRF(1)	Screening Result of PHTH(2)	Result of Wet Chemical Testing(3) (mg/kg)	Conclusion on EU RoHS	Sample Submitted / Resubmitted Date
1	MS-Silvery metal lump(key)	Pb Cd Hg Cr(VI)▼ PBBs PBDEs DBP BBP DEHP DIBP	BL BL BL BL --- --- --- --- --- ---	--- --- --- --- --- --- --- --- --- ---	--- --- --- --- --- --- --- --- --- ---	Comply Comply Comply Comply --- --- --- --- --- ---	26 Mar 2018
2	MS-Black plastic bracket(key)	Pb Cd Hg Cr(VI)▼ PBBs PBDEs DBP BBP DEHP DIBP	BL BL BL BL BL BL --- --- --- ---	--- --- --- --- --- --- BL BL BL BL	--- --- --- --- --- --- --- --- --- ---	Comply Comply Comply Comply Comply Comply Comply Comply Comply Comply	26 Mar 2018
3	MS-Silvery metal ring(key)	Pb Cd Hg Cr(VI)▼ PBBs PBDEs DBP	BL BL BL IN --- --- ---	--- --- --- --- --- --- ---	--- --- --- ND --- --- ---	Comply Comply Comply Comply --- --- ---	26 Mar 2018



Part No.	Part Description	Restricted Substances	Results of EDXRF(1)	Screening Result of PHTH(2)	Result of Wet Chemical Testing(3) (mg/kg)	Conclusion on EU RoHS	Sample Submitted / Resubmitted Date
		BBP DEHP DIBP	--- --- ---	--- --- ---	--- --- ---	--- --- ---	
4	MS-Transparent plastic tie(key)	Pb Cd Hg Cr(VI)▼ PBBs PBDEs DBP BBP DEHP DIBP	BL BL BL BL BL BL --- --- --- ---	--- --- --- --- --- --- BL BL BL BL	--- --- --- --- --- --- --- --- --- ---	Comply Comply Comply Comply Comply Comply Comply Comply Comply Comply	26 Mar 2018
5	MS-Black coating	Pb Cd Hg Cr(VI)▼ PBBs PBDEs DBP BBP DEHP DIBP	BL BL BL BL BL BL --- --- --- ---	--- --- --- --- --- --- BL BL BL BL	--- --- --- --- --- --- --- --- --- ---	Comply Comply Comply Comply Comply Comply Comply Comply Comply Comply	26 Mar 2018



Part No.	Part Description	Restricted Substances	Results of EDXRF(1)	Screening Result of PHTH(2)	Result of Wet Chemical Testing(3) (mg/kg)	Conclusion on EU RoHS	Sample Submitted / Resubmitted Date
6	MS-Silvery metal base	Pb	BL	---	---	Comply	26 Mar 2018
		Cd	BL	---	---	Comply	
		Hg	BL	---	---	Comply	
		Cr(VI)▼	BL	---	---	Comply	
		PBBs	---	---	---	---	
		PBDEs	---	---	---	---	
		DBP	---	---	---	---	
		BBP	---	---	---	---	
		DEHP	---	---	---	---	
		DIBP	---	---	---	---	
7 -S	MS-Silvery metal nut	Pb	BL	---	---	Comply	26 Mar 2018
		Cd	BL	---	---	Comply	
		Hg	BL	---	---	Comply	
		Cr(VI)▼	IN	---	ND	Comply	
		PBBs	---	---	---	---	
		PBDEs	---	---	---	---	
		DBP	---	---	---	---	
		BBP	---	---	---	---	
		DEHP	---	---	---	---	
		DIBP	---	---	---	---	
8	MS-Black plastic sheath	Pb	BL	---	---	Comply	26 Mar 2018
		Cd	BL	---	---	Comply	
		Hg	BL	---	---	Comply	
		Cr(VI)▼	BL	---	---	Comply	
		PBBs	BL	---	---	Comply	
		PBDEs	BL	---	---	Comply	
		DBP	---	BL	---	Comply	



Part No.	Part Description	Restricted Substances	Results of EDXRF(1)	Screening Result of PHTH(2)	Result of Wet Chemical Testing(3) (mg/kg)	Conclusion on EU RoHS	Sample Submitted / Resubmitted Date
		BBP	---	BL	---	Comply	
		DEHP	---	BL	---	Comply	
		DIBP	---	BL	---	Comply	
9 -S	MS-Silvery metal screw	Pb	BL	---	---	Comply	26 Mar 2018
		Cd	BL	---	---	Comply	
		Hg	BL	---	---	Comply	
		Cr(VI)▼	IN	---	ND	Comply	
		PBBs	---	---	---	---	
		PBDEs	---	---	---	---	
		DBP	---	---	---	---	
		BBP	---	---	---	---	
		DEHP	---	---	---	---	
		DIBP	---	---	---	---	
10	MS-Silvery metal spring	Pb	BL	---	---	Comply	26 Mar 2018
		Cd	BL	---	---	Comply	
		Hg	BL	---	---	Comply	
		Cr(VI)▼	IN	---	ND	Comply	
		PBBs	---	---	---	---	
		PBDEs	---	---	---	---	
		DBP	---	---	---	---	
		BBP	---	---	---	---	
		DEHP	---	---	---	---	
		DIBP	---	---	---	---	



Part No.	Part Description	Restricted Substances	Results of EDXRF(1)	Screening Result of PHTH(2)	Result of Wet Chemical Testing(3) (mg/kg)	Conclusion on EU RoHS	Sample Submitted / Resubmitted Date
11 -C	MS-Black plastic lump	Pb	BL	---	---	Comply	26 Mar 2018
		Cd	BL	---	---	Comply	
		Hg	BL	---	---	Comply	
		Cr(VI)▼	BL	---	---	Comply	
		PBBs	BL	---	---	Comply	
		PBDEs	BL	---	---	Comply	
		DBP	---	BL	---	Comply	
		BBP	---	BL	---	Comply	
		DEHP	---	BL	---	Comply	
DIBP	---	BL	---	Comply			
12 -S	MS-Silvery metal piece	Pb	BL	---	---	Comply	26 Mar 2018
		Cd	BL	---	---	Comply	
		Hg	BL	---	---	Comply	
		Cr(VI)▼	IN	---	ND	Comply	
		PBBs	---	---	---	---	
		PBDEs	---	---	---	---	
		DBP	---	---	---	---	
		BBP	---	---	---	---	
		DEHP	---	---	---	---	
DIBP	---	---	---	---			
13 -S	MS-Silvery metal nut	Pb	BL	---	---	Comply	26 Mar 2018
		Cd	BL	---	---	Comply	
		Hg	BL	---	---	Comply	
		Cr(VI)▼	IN	---	ND	Comply	
		PBBs	---	---	---	---	
		PBDEs	---	---	---	---	
		DBP	---	---	---	---	



Part No.	Part Description	Restricted Substances	Results of EDXRF(1)	Screening Result of PHTH(2)	Result of Wet Chemical Testing(3) (mg/kg)	Conclusion on EU RoHS	Sample Submitted / Resubmitted Date
		BBP DEHP DIBP	--- --- ---	--- --- ---	--- --- ---	--- --- ---	
14	MS-Silvery metal bracket	Pb Cd Hg Cr(VI)▼ PBBs PBDEs DBP BBP DEHP DIBP	BL BL BL BL --- --- --- --- --- ---	--- --- --- --- --- --- --- --- --- ---	--- --- --- --- --- --- --- --- --- ---	Comply Comply Comply Comply --- --- --- --- --- ---	26 Mar 2018
15	MS-Green metal screw(lock)	Pb Cd Hg Cr(VI)▼ PBBs PBDEs DBP BBP DEHP DIBP	BL BL BL IN --- --- --- --- --- ---	--- --- --- --- --- --- --- --- --- ---	--- --- --- ND --- --- --- --- --- ---	Comply Comply Comply Comply --- --- --- --- --- ---	26 Mar 2018



Part No.	Part Description	Restricted Substances	Results of EDXRF(1)	Screening Result of PHTH(2)	Result of Wet Chemical Testing(3) (mg/kg)	Conclusion on EU RoHS	Sample Submitted / Resubmitted Date
16	MS-Silvery metal screw(lock)	Pb	BL	---	---	Comply	26 Mar 2018
		Cd	BL	---	---	Comply	
		Hg	BL	---	---	Comply	
		Cr(VI)▼	IN	---	ND	Comply	
		PBBs	---	---	---	---	
		PBDEs	---	---	---	---	
		DBP	---	---	---	---	
		BBP	---	---	---	---	
		DEHP	---	---	---	---	
		DIBP	---	---	---	---	
17 -S	MS-Transparent rubber ring(lock)	Pb	BL	---	---	Comply	26 Mar 2018
		Cd	BL	---	---	Comply	
		Hg	BL	---	---	Comply	
		Cr(VI)▼	BL	---	---	Comply	
		PBBs	BL	---	---	Comply	
		PBDEs	BL	---	---	Comply	
		DBP	---	BL	---	Comply	
		BBP	---	BL	---	Comply	
		DEHP	---	BL	---	Comply	
		DIBP	---	BL	---	Comply	
18	MS-Colorful metal lump(lock)	Pb	BL	---	---	Comply	26 Mar 2018
		Cd	BL	---	---	Comply	
		Hg	BL	---	---	Comply	
		Cr(VI)▼	IN	---	ND	Comply	
		PBBs	---	---	---	---	
		PBDEs	---	---	---	---	
		DBP	---	---	---	---	



Part No.	Part Description	Restricted Substances	Results of EDXRF(1)	Screening Result of PHTH(2)	Result of Wet Chemical Testing(3) (mg/kg)	Conclusion on EU RoHS	Sample Submitted / Resubmitted Date
		BBP DEHP DIBP	--- --- ---	--- --- ---	--- --- ---	--- --- ---	
19	MS-Silvery metal spring(lock)	Pb Cd Hg Cr(VI)▼ PBBs PBDEs DBP BBP DEHP DIBP	BL BL BL IN --- --- --- --- --- ---	--- --- --- --- --- --- --- --- --- ---	--- --- --- ND --- --- --- --- --- ---	Comply Comply Comply Comply --- --- --- --- --- ---	26 Mar 2018
20	MS-Black plastic shell(lock)	Pb Cd Hg Cr(VI)▼ PBBs PBDEs DBP BBP DEHP DIBP	BL BL BL BL BL BL --- --- --- ---	--- --- --- --- --- --- BL BL BL BL	--- --- --- --- --- --- --- --- --- ---	Comply Comply Comply Comply Comply Comply Comply Comply Comply Comply	26 Mar 2018



Part No.	Part Description	Restricted Substances	Results of EDXRF(1)	Screening Result of PHTH(2)	Result of Wet Chemical Testing(3) (mg/kg)	Conclusion on EU RoHS	Sample Submitted / Resubmitted Date
21	MS-Black metal label(lock)	Pb	BL	---	---	Comply	26 Mar 2018
		Cd	BL	---	---	Comply	
		Hg	BL	---	---	Comply	
		Cr(VI)▼	BL	---	---	Comply	
		PBBs	---	---	---	---	
		PBDEs	---	---	---	---	
		DBP	---	---	---	---	
		BBP	---	---	---	---	
		DEHP	---	---	---	---	
22	MS-Silvery metal rod(lock)	Pb	BL	---	---	Comply	26 Mar 2018
		Cd	BL	---	---	Comply	
		Hg	BL	---	---	Comply	
		Cr(VI)▼	IN	---	ND	Comply	
		PBBs	---	---	---	---	
		PBDEs	---	---	---	---	
		DBP	---	---	---	---	
		BBP	---	---	---	---	
		DEHP	---	---	---	---	
23	MS-Black metal nut(lock)	Pb	BL	---	---	Comply	26 Mar 2018
		Cd	BL	---	---	Comply	
		Hg	BL	---	---	Comply	
		Cr(VI)▼	BL	---	---	Comply	
		PBBs	---	---	---	---	
		PBDEs	---	---	---	---	
		DBP	---	---	---	---	



Part No.	Part Description	Restricted Substances	Results of EDXRF(1)	Screening Result of PHTH(2)	Result of Wet Chemical Testing(3) (mg/kg)	Conclusion on EU RoHS	Sample Submitted / Resubmitted Date
		BBP DEHP DIBP	--- --- ---	--- --- ---	--- --- ---	--- --- ---	
24	MS-Silvery metal spring	Pb Cd Hg Cr(VI)▼ PBBs PBDEs DBP BBP DEHP DIBP	BL BL BL IN --- --- --- --- --- --- ---	--- --- --- --- --- --- --- --- --- --- ---	--- --- --- ND --- --- --- --- --- --- ---	Comply Comply Comply Comply --- --- --- --- --- --- ---	26 Mar 2018
25	MS-Silvery metal spring	Pb Cd Hg Cr(VI)▼ PBBs PBDEs DBP BBP DEHP DIBP	BL BL BL IN --- --- --- --- --- --- ---	--- --- --- --- --- --- --- --- --- --- ---	--- --- --- ND --- --- --- --- --- --- ---	Comply Comply Comply Comply --- --- --- --- --- --- ---	26 Mar 2018



Part No.	Part Description	Restricted Substances	Results of EDXRF(1)	Screening Result of PHTH(2)	Result of Wet Chemical Testing(3) (mg/kg)	Conclusion on EU RoHS	Sample Submitted / Resubmitted Date
26	MS-Silvery metal piece	Pb	BL	---	---	Comply	26 Mar 2018
		Cd	BL	---	---	Comply	
		Hg	BL	---	---	Comply	
		Cr(VI)▼	IN	---	ND	Comply	
		PBBs	---	---	---	---	
		PBDEs	---	---	---	---	
		DBP	---	---	---	---	
		BBP	---	---	---	---	
		DEHP	---	---	---	---	
		DIBP	---	---	---	---	
27	MS-Silvery metal lump	Pb	BL	---	---	Comply	26 Mar 2018
		Cd	BL	---	---	Comply	
		Hg	BL	---	---	Comply	
		Cr(VI)▼	IN	---	ND	Comply	
		PBBs	---	---	---	---	
		PBDEs	---	---	---	---	
		DBP	---	---	---	---	
		BBP	---	---	---	---	
		DEHP	---	---	---	---	
		DIBP	---	---	---	---	
28	MS-Silvery metal piece	Pb	BL	---	---	Comply	26 Mar 2018
		Cd	BL	---	---	Comply	
		Hg	BL	---	---	Comply	
		Cr(VI)▼	IN	---	ND	Comply	
		PBBs	---	---	---	---	
		PBDEs	---	---	---	---	
		DBP	---	---	---	---	



Part No.	Part Description	Restricted Substances	Results of EDXRF(1)	Screening Result of PHTH(2)	Result of Wet Chemical Testing(3) (mg/kg)	Conclusion on EU RoHS	Sample Submitted / Resubmitted Date
		BBP DEHP DIBP	--- --- ---	--- --- ---	--- --- ---	--- --- ---	
29	MS-Silvery metal cover	Pb Cd Hg Cr(VI)▼ PBBs PBDEs DBP BBP DEHP DIBP	BL BL BL IN --- --- --- --- --- ---	--- --- --- --- --- --- --- --- --- ---	--- --- --- ND --- --- --- --- --- ---	Comply Comply Comply Comply --- --- --- --- --- ---	26 Mar 2018
30 -C	MS-Black rubber lump	Pb Cd Hg Cr(VI)▼ PBBs PBDEs DBP BBP DEHP DIBP	BL BL BL BL BL BL --- --- --- ---	--- --- --- --- --- --- BL BL IN BL	--- --- --- --- --- --- --- --- 810 ---	Comply Comply Comply Comply Comply Comply Comply Comply Comply Comply	26 Mar 2018



Part No.	Part Description	Restricted Substances	Results of EDXRF(1)	Screening Result of PHTH(2)	Result of Wet Chemical Testing(3) (mg/kg)	Conclusion on EU RoHS	Sample Submitted / Resubmitted Date
31	MS-Black metal screw	Pb	BL	---	---	Comply	26 Mar 2018
		Cd	BL	---	---	Comply	
		Hg	BL	---	---	Comply	
		Cr(VI)▼	IN	---	ND	Comply	
		PBBs	---	---	---	---	
		PBDEs	---	---	---	---	
		DBP	---	---	---	---	
		BBP	---	---	---	---	
		DEHP	---	---	---	---	
32	MS-Copper-colored metal screw	Pb	BL	---	---	Comply	26 Mar 2018
		Cd	BL	---	---	Comply	
		Hg	BL	---	---	Comply	
		Cr(VI)▼	IN	---	ND	Comply	
		PBBs	---	---	---	---	
		PBDEs	---	---	---	---	
		DBP	---	---	---	---	
		BBP	---	---	---	---	
		DEHP	---	---	---	---	
33	MS-Yellow plastic adhesive paper	Pb	BL	---	---	Comply	26 Mar 2018
		Cd	BL	---	---	Comply	
		Hg	BL	---	---	Comply	
		Cr(VI)▼	BL	---	---	Comply	
		PBBs	BL	---	---	Comply	
		PBDEs	BL	---	---	Comply	
		DBP	---	BL	---	Comply	



Part No.	Part Description	Restricted Substances	Results of EDXRF(1)	Screening Result of PHTH(2)	Result of Wet Chemical Testing(3) (mg/kg)	Conclusion on EU RoHS	Sample Submitted / Resubmitted Date
		BBP	---	BL	---	Comply	
		DEHP	---	BL	---	Comply	
		DIBP	---	BL	---	Comply	
34	MS-Black rubber steel	Pb	BL	---	---	Comply	26 Mar 2018
		Cd	BL	---	---	Comply	
		Hg	BL	---	---	Comply	
		Cr(VI)▼	BL	---	---	Comply	
		PBBs	IN	---	ND	Comply	
		PBDEs	IN	---	<800 *	Comply	
		DBP	---	BL	---	Comply	
		BBP	---	BL	---	Comply	
		DEHP	---	IN	140	Comply	
		DIBP	---	BL	---	Comply	
35	MS-Silvery metal lump	Pb	BL	---	---	Comply	26 Mar 2018
		Cd	BL	---	---	Comply	
		Hg	BL	---	---	Comply	
		Cr(VI)▼	IN	---	ND	Comply	
		PBBs	---	---	---	---	
		PBDEs	---	---	---	---	
		DBP	---	---	---	---	
		BBP	---	---	---	---	
		DEHP	---	---	---	---	
		DIBP	---	---	---	---	



Remark :

- (1) (a) There are the results on total Br while test items on restricted substances are PBBs and PBDEs. There is the result on total Cr while test item on restricted substances is Cr(VI).
- (b) Results are obtained by EDXRF for primary screening, and further chemical testing by ICP-OES (for Cd, Pb, Hg), UV-Vis (for Cr(VI)) and GC-MS (for PBBs, PBDEs) is recommended to be performed, if the concentration exceeds the below warning value according to IEC62321-3-1:2013 (unit: mg/kg).

Element	Polymer	Metal	Composite Materials
Cd	$BL \leq (70-3\sigma) < X < (130+3\sigma) \leq OL$	$BL \leq (70-3\sigma) < X < (130+3\sigma) \leq OL$	$LOD < X < (150+3\sigma) \leq OL$
Pb	$BL \leq (700-3\sigma) < X < (1300+3\sigma) \leq OL$	$BL \leq (700-3\sigma) < X < (1300+3\sigma) \leq OL$	$BL \leq (500-3\sigma) < X < (1500+3\sigma) \leq OL$
Hg	$BL \leq (700-3\sigma) < X < (1300+3\sigma) \leq OL$	$BL \leq (700-3\sigma) < X < (1300+3\sigma) \leq OL$	$BL \leq (500-3\sigma) < X < (1500+3\sigma) \leq OL$
Br	$BL \leq (300-3\sigma) < X$	--	$BL \leq (250-3\sigma) < X$
Cr	$BL \leq (700-3\sigma) < X$	$BL \leq (700-3\sigma) < X$	$BL \leq (500-3\sigma) < X$

(c) BL = Below Limit, OL = Over Limit, IN = Inconclusive, LOD = Limit of Detection, -- = Not regulated.

(d) The XRF screening test for RoHS elements - The reading may be different to the actual content in the sample be of non-uniformity composition.

- (2) Screening results of PHTH are for primary screening, and further chemical testing by GC-MS (for DBP, BBP, DEHP and DIBP) are recommended to be performed if the concentration exceeds the below warning value (unit: mg/kg)

Compound	Polymer
DBP	$BL \leq 600 < X$
BBP	$BL \leq 600 < X$
DEHP	$BL \leq 600 < X$
DIBP	$BL \leq 600 < X$

- (3) (a) mg/kg = 0.0001%, MDL=Method detection Limit, ND = Not Detected (<MDL), --- = Not conducted, - = Without BOM.

(b) Unit and MDL in wet chemical test

Test Item	Pb	Cd	Hg	DBP	BBP	DEHP	DIBP
Unit	mg/kg	mg/kg	mg/kg	mg/kg	mg/kg	mg/kg	mg/kg
MDL	10	10	10	100	100	100	100



The MDL for single compound of PBBs and PBDEs is 100 mg/kg,
 MDL of Cr(VI) for polymer, composite and leather sample is 10 mg/kg,
 MDL of Cr(VI) for metal sample is 0.10µg/cm².

(c) ▼ =Metal sample

- a. The sample is positive for CrVI if the CrVI concentration is greater than 0.13 µg/cm².
 The sample coating is considered to contain CrVI
- b. The sample is negative for CrVI if CrVI is ND (concentration less than 0.10 µg/cm²).
 The coating is considered a non-CrVI based coating
- c. The result between 0.10 µg/cm² and 0.13 µg/cm² is considered to be inconclusive
 - unavoidable coating variations may influence the determination

Information on storage conditions and production date of the tested sample is unavailable and thus Cr(VI) results represent status of the sample at the time of testing.

IEC 62321 series is equivalent to EN 62321 series

http://www.cenelec.eu/dyn/www/f?p=104:30:1742232870351101:::FSP_ORG_ID,FSP_LANG_ID:1258637,25

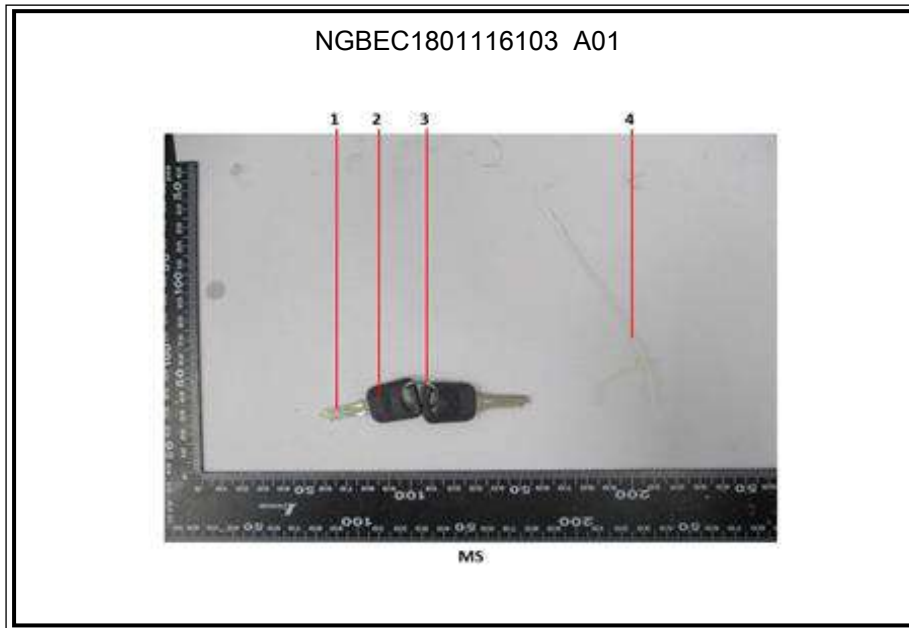


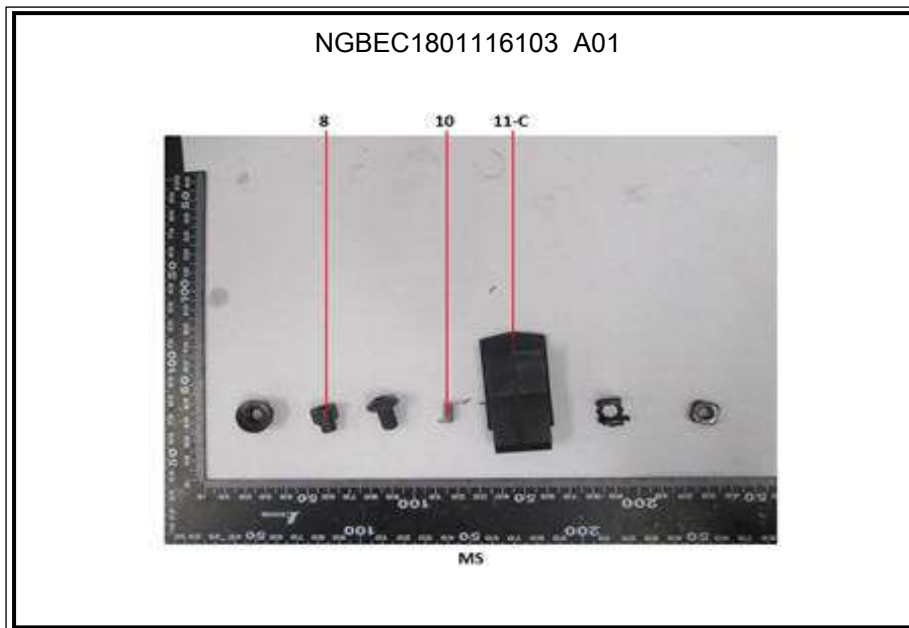
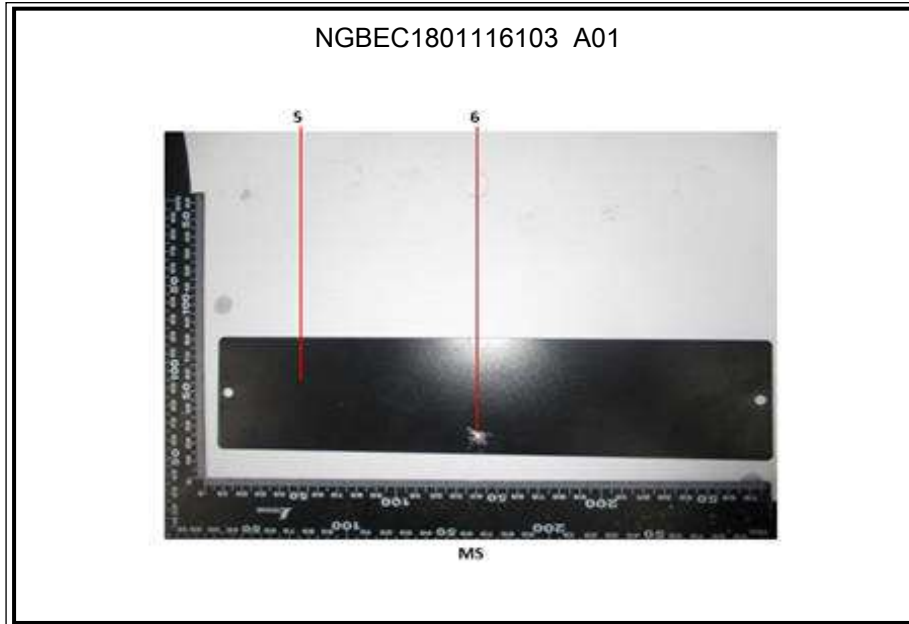
(4) According to the declaration from applicant, the materials of Model “MS” are the same as those in Model mentioned in Client Ref. Information and its results for support the results of Model mentioned in Client Ref. Information. The applicant will take the responsibility of all discrepancy and risk.

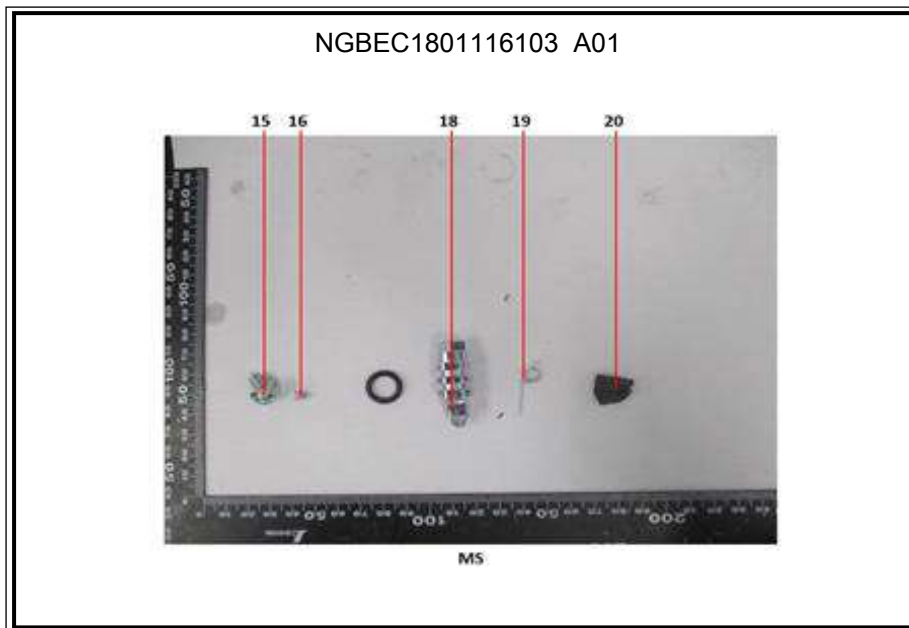
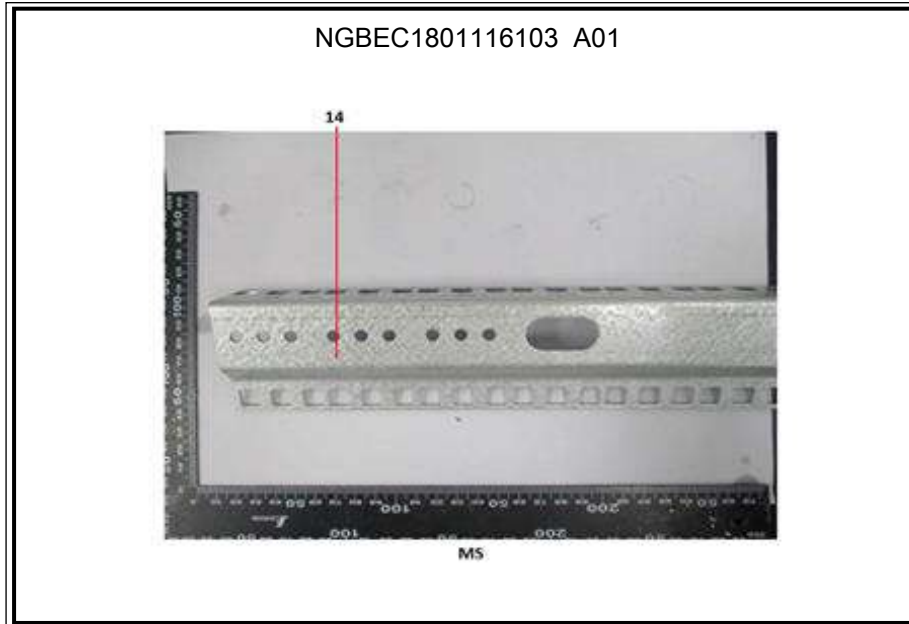
(5) * =Considering insufficient sample amount, the Method Detection Limit (MDL) is raised appropriately.

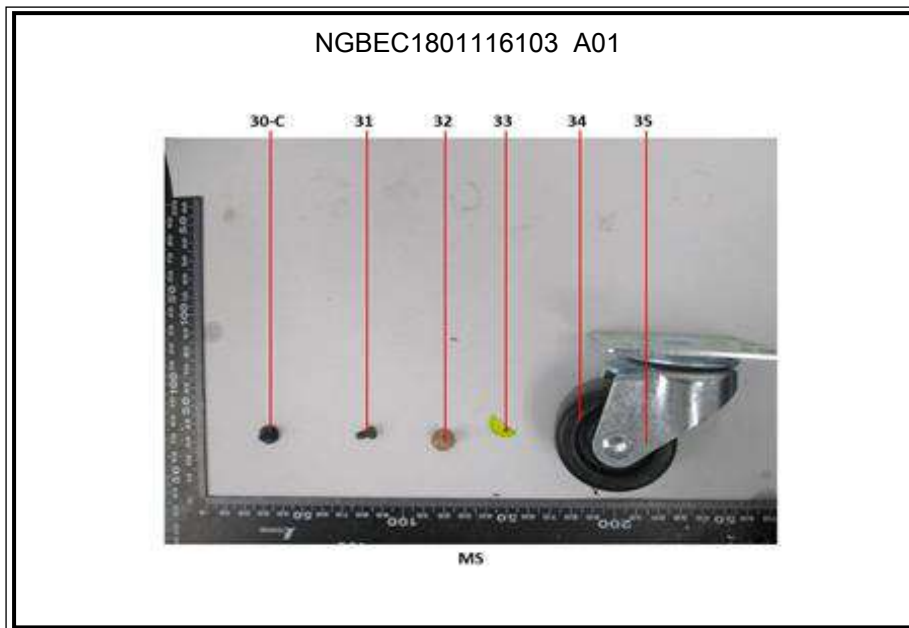
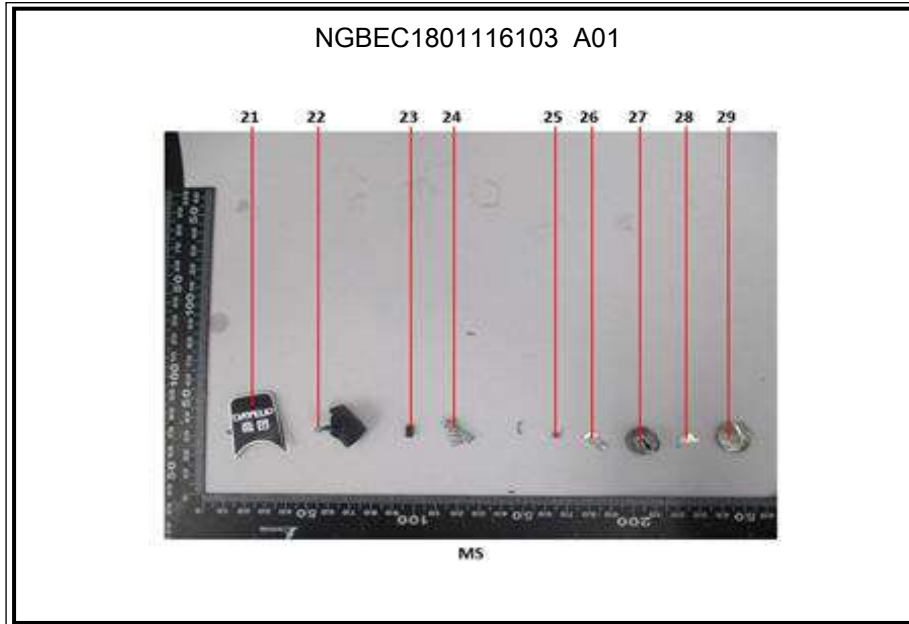


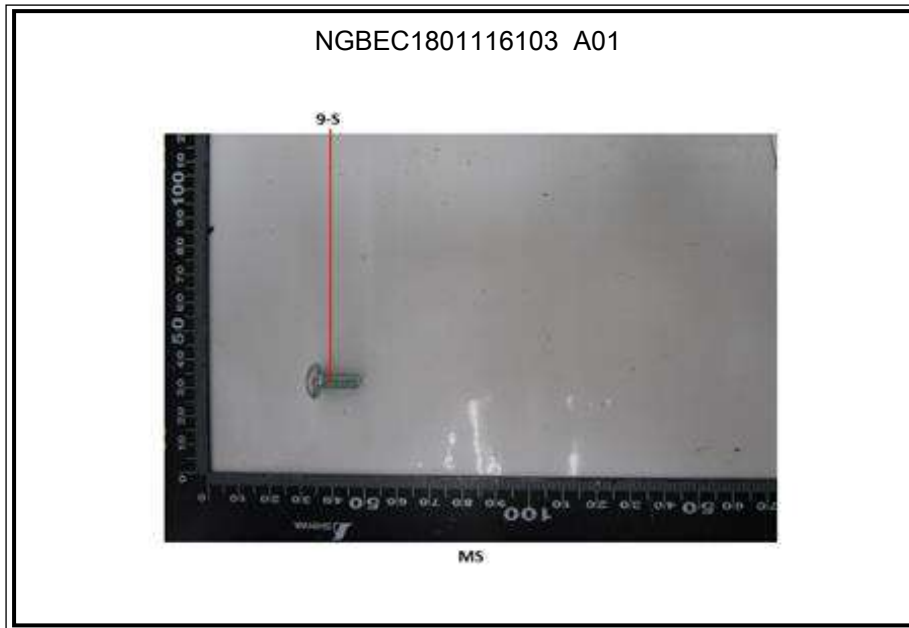
Sample photo:

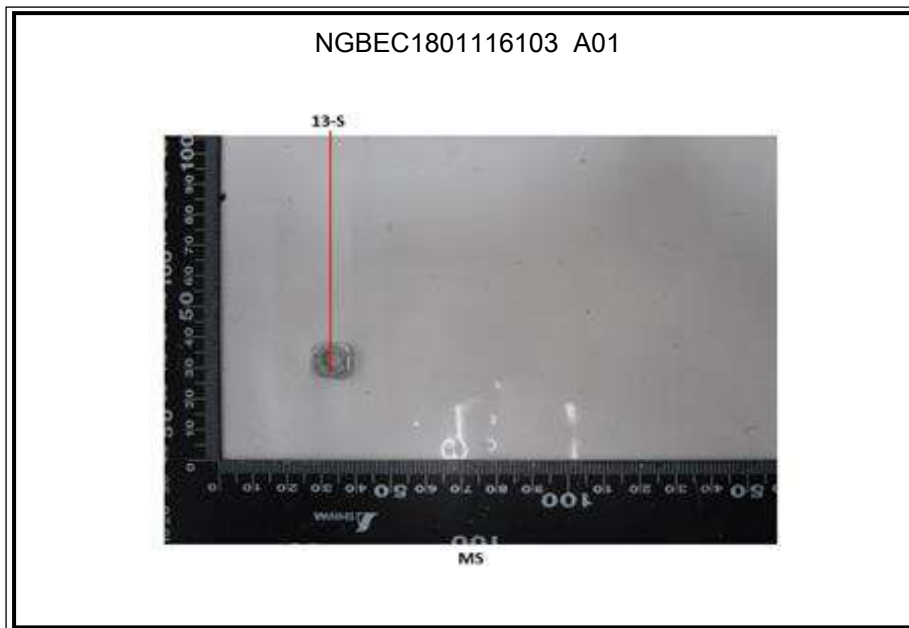


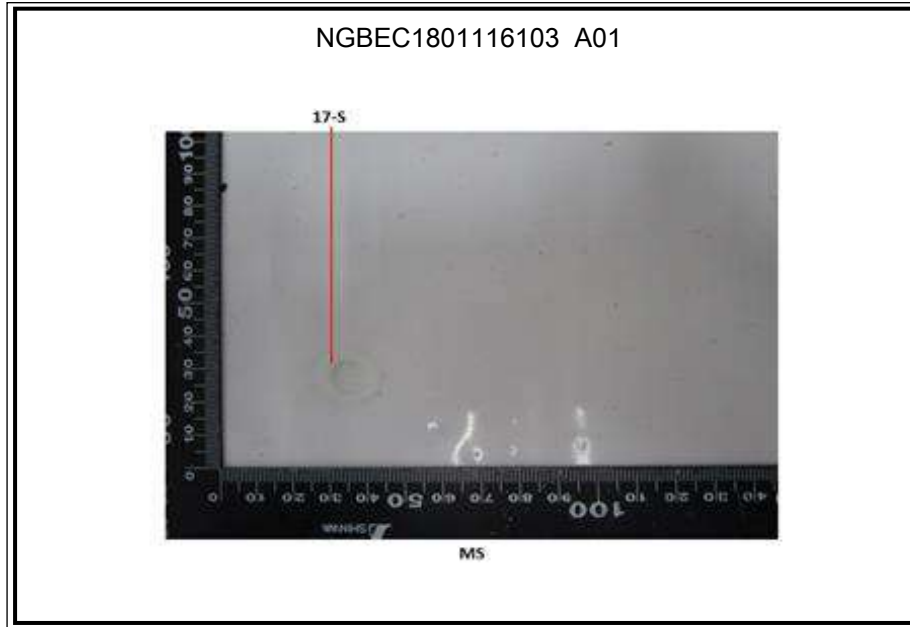












SGS authenticate the photo on original report only

*** End of Report ***

