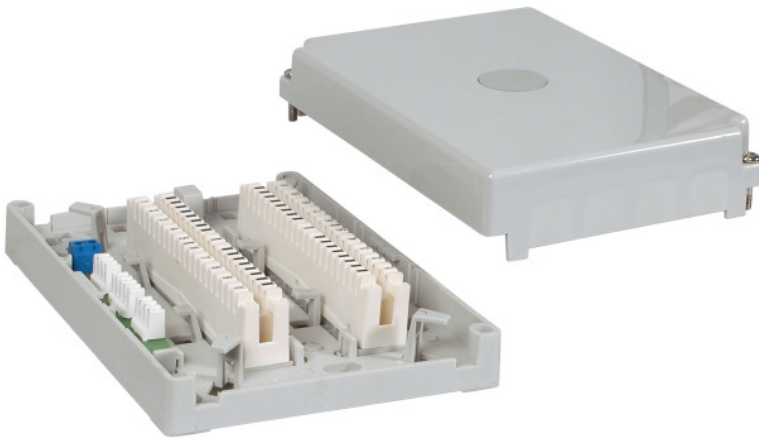


MINI-DISTRIBUIDOR 2 REGLETAS 10 PARES



Description

Fitted with 2 LSA disconnection modules 2/10 10pairs

General data

Model	Wall-mounted distributor
Mounting method	surface-mounted
With connecting lugs	True
DIN-compatible	False
110-compatible	False
LSA	True
Material	Plastic
Colour	Grey

Available variants

Article no.	Title	Type	Max. number of dual cores	Height	Width	Depth	Weight
46053.1	LSA-Minibox 201C 20pairs WxHxD = 120 x 170 x 42 mm	LSA Mini Box 201C 20DA	20	170 mm	120 mm	42 mm	0.25 kg

Ideal Technology has a policy of continuous improvement. Specifications are subject to change without notice.