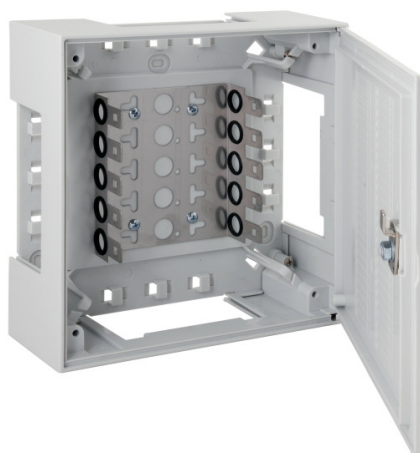


# DATASHEET

## BOX II for 50pairs

Article no.

CAJICT50P



### Description

Plastic distributor, indoor

Protection degree IP30

With 1 x backmount frame for 5 x LSA connection modules 2/10 10pair

Incl. 4 top strip

### General data

Model	Wall-mounted distributor
Mounting method	Surface mounted (plaster)
With connecting lugs	Ja
Mounting dimension	96 mm
DIN-compatible	Nein
110-compatible	Nein
LSA	Ja
Material	Plastic
Degree of protection (IP)	IP30
Colour	Grey

### Available variants

Article no.	Title	Type	Max. number of dual cores	Height	Width	Depth	Weight
46025.1	Box II for 50pairs with Latch	Box II 50pairs with latch	50	215 mm	215 mm	76 mm	0.83 kg
CAJICT50P	Box II for 50pairs with Lock	BOX II 50pairs with lock	50	215 mm	215 mm	76 mm	0.83 kg