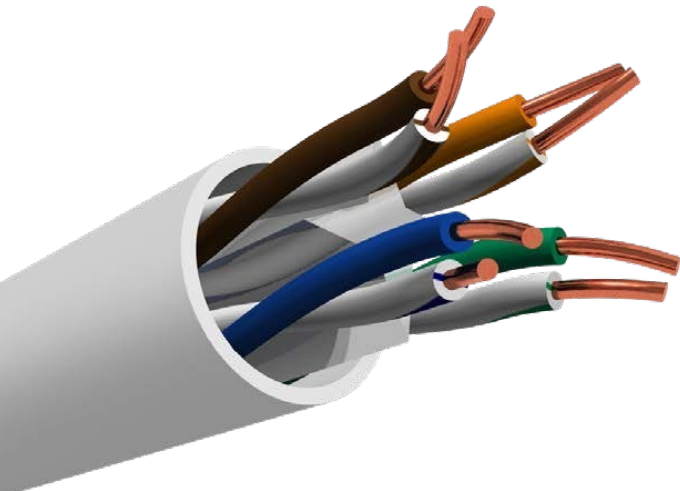


Cable Cat. 6 U/UTP CU LSZH rígido blanco CPR B2ca



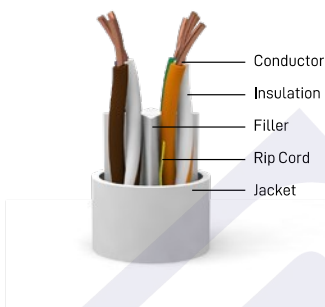
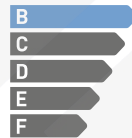
PRODUCT DESCRIPTION

• Standard Reference:

ISO/IEC 11801:2011
IEC 61156-5:2012
EN 13501-6
EN 50173-1:2011
EN 50173-2:2007 including amendment A1:2010
EN 50288-9-1:2012
EN 50288-4
EN 50575:2014+A1:2016
EN 50399:2011+A1:2016
EN 60332-1[1,2], 60332-3C, 60754-1[1,2], 61034-1[1,2]
ANSI/TIA-568-6-2:2009

• **Rated temperature:** 90°C
• **Installation temperature:** -30°C~+50°C
• RoHS complied
• **DoP N°:** 2658-CPR-5015_FAM094_05
• **Application:**
VoIP, ISDN
Token, 100M TP-PDM
Analog and Data Video
TR-16 Active and Passive
115M/662m/1.2GATM
IEEE802.3: 100Base, 100Base-T, 1GBase-T

CRP
CRP Class:



TECHNICAL PERFORMANCE (100m)

Frequency (MHz)	RL(dB) min.	Attenuation (dB/100m) max.	NEXT (dB/100m)	ACR (dB)
1	20.0	2.0	74.3	72.28
4.0	23.0	3.8	65.3	61.49
8.0	24.5	5.3	60.8	55.43
10.0	25.0	6.0	59.3	53.35
16.0	25.0	7.6	56.2	48.68
20.0	25.0	8.5	54.8	46.31
25.0	24.3	9.5	53.3	43.83
31.25	23.6	10.7	51.9	41.20
62.5	21.5	15.4	47.7	31.98
100	20.1	19.8	44.3	24.50
200	18.0	29.0	39.8	14.60
250	17.3	32.8	38.3	9.48

Frequency (MHz)	ELFEXT (dB/100m)	PSNEXT (dB/100m)	PSELFEXT (dB/100m)	Impedance (Ohms)
1	67.8	72.3	64.8	100±15
4	55.8	63.3	52.8	
8	49.7	58.8	46.7	
10	47.8	57.3	44.8	
16	43.7	54.2	40.7	
20	41.8	52.8	38.8	
25	39.8	41.3	36.8	
31.25	37.9	49.9	34.9	
62.5	31.9	45.4	28.9	
100	27.8	42.3	24.8	
200	21.8	37.8	18.8	
250	19.8	36.3	16.8	

CABLE CONSTRUCTION

Conductor	Material	SOLID Bare Copper
	Nom.O.D (mm)	0.55 ± 0.005mm. 23 & 24AWG
Insulation	Material	HPDE
Insulation Diam. ø		0.98 ± 0.03mm
Thickness		AVG: 0.55mm, MIN: 0.29mm
Twisted Pair (4) Unshielded	Filler	PE: 4.8*0.4
	Rip Cord	Yes
Jacket LSZH-RoHS	Thickness	AVG: 0.55mm ± 0.05mm
	Outer Diam.ø	6.0 ± 0.40mm
	Jacket Color (standard)	White: RAL 9016 ○
Code Color	1 White/Blue	2 White/Orange
	3 White/Green	4 White/Brown
Dimension - Weight	35x36x31cm - 43Kg/Km	
Packing	1 Wooden Drum (& Carton Box, 2)	
Packing Length	305 ± 1.0m	

TECHNICAL PERFORMANCE (100m)

Max. Conductor DC Resistance at 20°C (Ω/Km)	<93.8
Rated Temperature (°C)	75
Rated Voltage (V)	300V
Velocity Ratio	68%
Delay (ns/100m)	≤45

Ideal Technology has a policy of continuous improvement. Specifications are subject to change without notice.