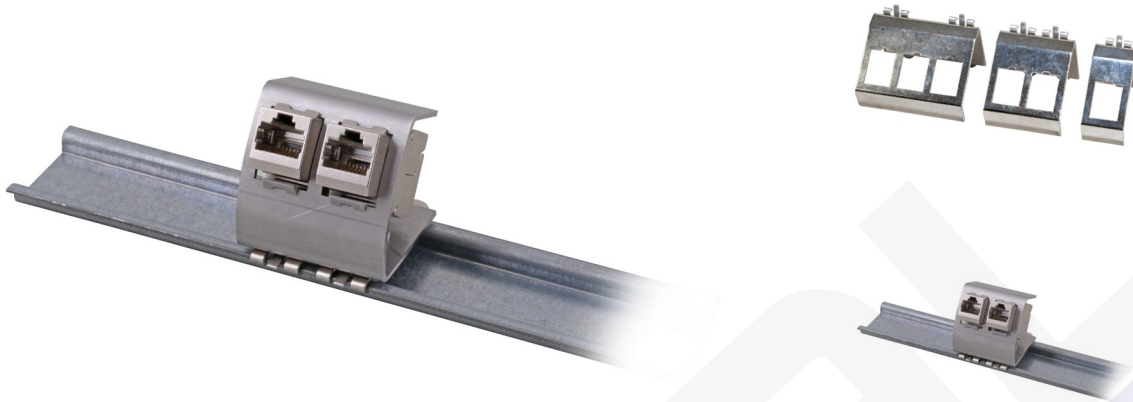


Regleta PDU 19" 1U 9 schuko en aluminio con piloto LED

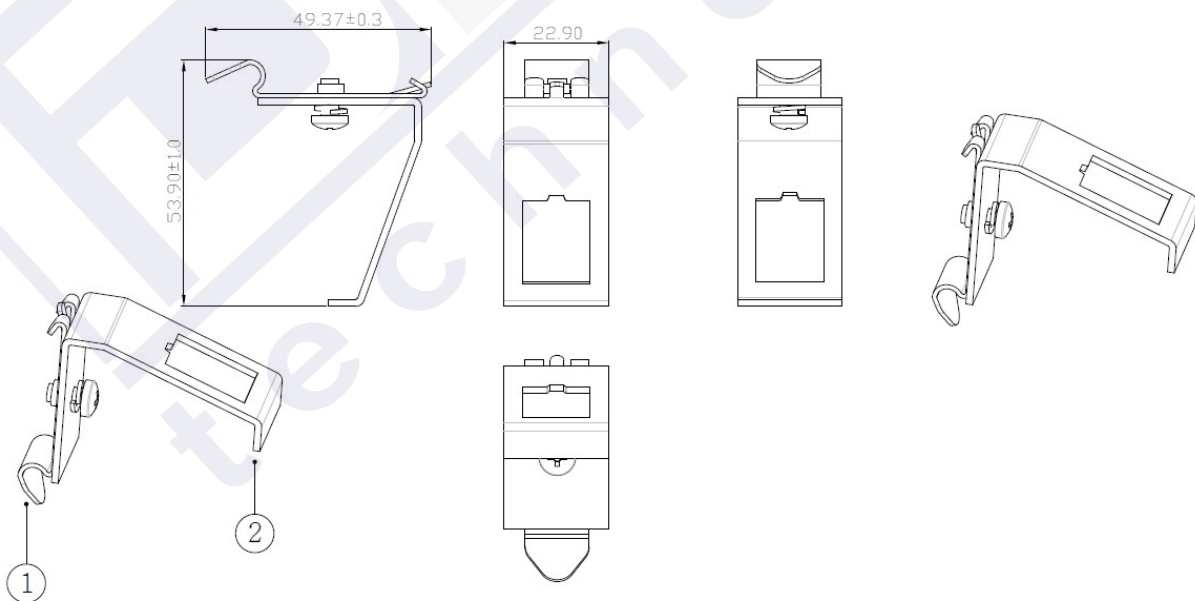


General data

Keystone holder, stainless steel
Intended for mounting on DIN-Rail
Delivery without Keystone Modules

Allgemeine Daten

Material	Metal
With labeling field	False
With earthing spring	False
Type of DIN-rail adapter	Inclined
Type of fastening	DIN rail (top hat rail) 35 mm



MECHANICAL

(1)Material: SUS304

(2)Material: SPCC

Ideal Technology has a policy of continuous improvement. Specifications are subject to change without notice.