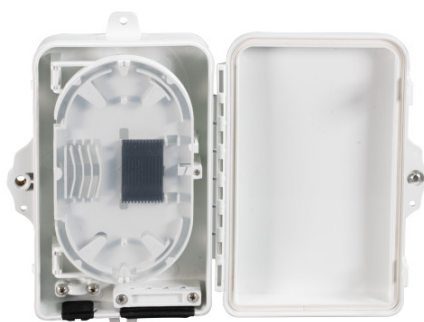
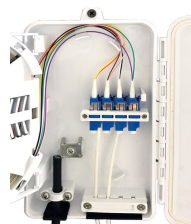


# Caja de empalme exterior FTTH enfrentadores de Fibras



## General data

### Application:

Optical Telecommunication Networks  
LAN, Optical fiber Communication Network  
CATV Networks  
FTTH access Network  
PON, G-PON

Configuration in LC with duplex adapters for 8 ports/ fibers

Configuration in SC with simplex adapters for 4 ports/ fibers

Delivery unassembled (**Crimp splice holder (12 splices)**), shrink splice holder (max. 8 splices double layed), 4x

*Ideal Technology has a policy of continuous improvement. Specifications are subject to change without notice.*

# Caja de empalme exterior FTTH enfrentadores de Fibras



shrink protection and material for wall mounting included)

## Allgemeine Daten

Holder for splitter	False
Colour	white
Max. Assembly (Adapter)	4
With Fiber overlength cassette	True
Cable sheath support	True
Hinged splice cassette	True
Suitable for adapter	SC Simplex/LC Duplex/E2000®
Cable entry without cable gland	1x max. 10mm / 4x max. 4mm
Scope of application	Outdoor
Mounting method	Wall mounting
Holder for gas blocker	False
Type of Splice protection	Crimp & Thermo
Possibility of mast mounting	False
Number of Fibres	8

## Mechanische Eigenschaften

IP Protection	IP65
Water protection	Protection against jet water
Foreign body and contact protection	Protection against ingrees of dust

## Abmessungen

Dimension	172x136x40 mm
-----------	---------------

## Umgebungsbedingungen

Temperature range	-25 - 70 °C
-------------------	-------------

Ideal Technology has a policy of continuous improvement. Specifications are subject to change without notice.