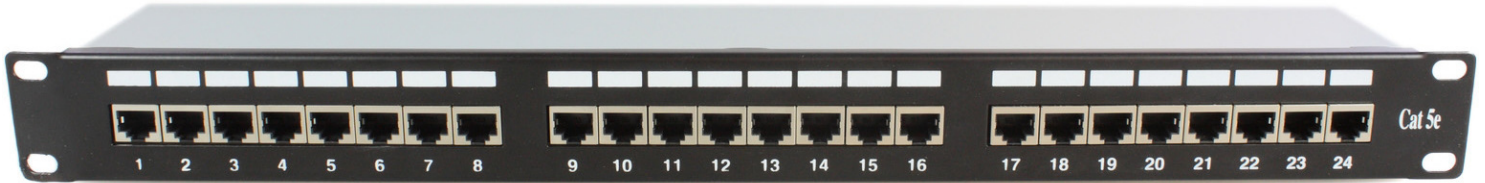


## DATASHEET

### Cat.5e 24-Port Patchpanel STP 100MHz 1Gbit 19" 1U



- Certified in accordance with Cat.5e, 100 Mbit/s
- Acc. ISO/IEC 11801, EN50173
- TIA/EIA 568A, 568B and EN50173 number-coded
- 24 x fully shielded RJ45 jacks
- 8-pole LSA terminal
- 19" fully shielded steel plate housing
- Strain relief via cable ties

<b>Mounting method:</b>	482.6 mm (19 inch)-installation
<b>Category:</b>	5E
<b>Number of height units:</b>	1
<b>Connection type:</b>	LSA
<b>Type of connector:</b>	RJ45 8(8)
<b>Screened:</b>	True
<b>Height:</b>	44.5 mm
<b>Width:</b>	483.0 mm
<b>Depth:</b>	100.0 mm

Article no.	Title	Number of buses/couplings	Colour	RAL-number
PA24F5E	Patchpanel 24xRJ45 Cat.5e 19", 1U, RAL7035, GHMT	24	Black	9005