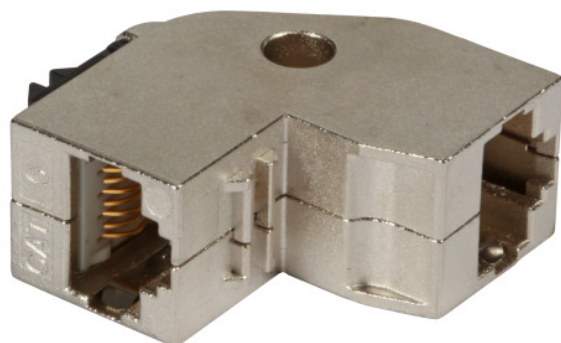


# Keystone Adapter Cat.6 STP, 90° slanted



## TECHNICAL PARAMETERS

Cat.6 RJ45 8/8 jacks, 1:1, shielded ,90° angled to downside.  
Can also be used with ISDN cable. Housing: metall, Snap-in  
spring: plastic.

**Category:** 6  
**Construction type:** straight  
**Type of connector:** 2 x RJ45  
**Model:** female/female  
**Type of fastening:** snap-in

Article no.	Title	Screened
AD37484	Cat.6 Snap-In Adapter, jack/jack 90°, shielded	True

*Ideal Technology has a policy of continuous improvement. Specifications are subject to change without notice.*