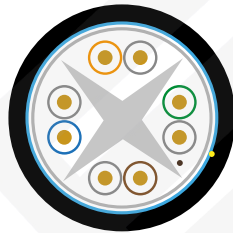
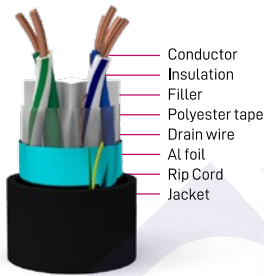
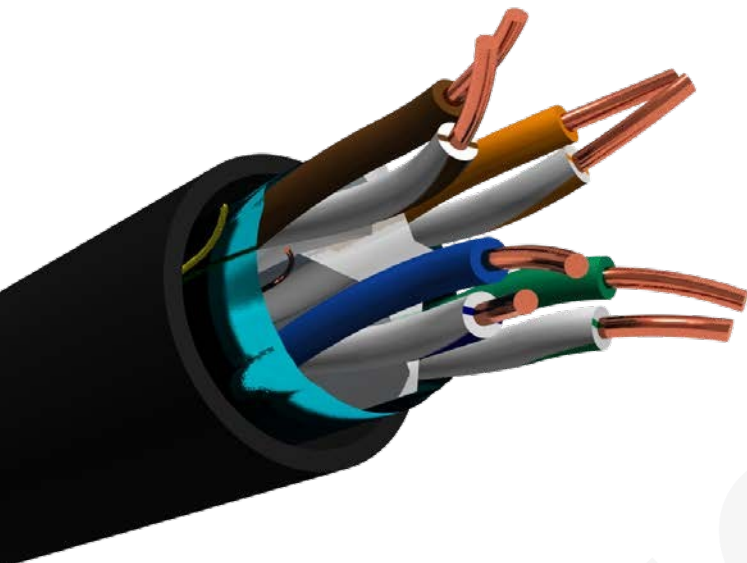


Cable Cat. 6A F/UTP CU PE rígido exterior 500m. negro CPR Fca



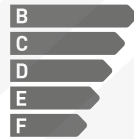
PRODUCT DESCRIPTION

• Standard Reference:

ISO/IEC 11801:2011
IEC 61156-5:2012
EN 13501-6
EN 50173-1:2011
EN 50173-2:2007 including amendment A1:2010
EN 50288-9-1:2012
EN 50288-4
EN 50575:2014+A1:2016
EN 60332-1[1,2],60332-3C, 60754-[1,2], 61034-[1,2]
ANSI/TIA-568-6-2:2009

- **Rated temperature:** 90°C
- **Installation temperature:** -30°C~+50°C
- RoHS/REACH complied
- **Application:**
VoIP, ISDN
Token, 100M TP-PDM
Analog and Data Video
TR-16 Active and Passive
115M/662m/1.2GATM
IEEE802.3: 100Base, 100Base-T,
1GBase-T

CRP Class:



TECHNICAL PERFORMANCE (100m)

Frequency (MHz)	RL(dB) min.	Attenuation (dB/100m) max.	NEXT (dB/100m)	ACR (dB)
4.0	23.0	3.7	65.27	40.00
8.0	24.5	5.2	60.75	40.00
10.0	26.8	5.9	59.30	40.00
16.0	25.0	7.4	56.24	37.96
20.0	25.0	8.3	54.78	36.99
31.5	23.6	10.5	51.88	35.05
62.5	21.5	14.9	47.36	32.04
100	20.1	19.0	44.30	30.00
200	18.0	27.5	38.30	/
300	16.8	34.2	37.10	/
500	15.2	45.3	33.80	/
Frequency (MHz)	ELFEXT (dB/100m)	PSNEXT (dB/100m)	PSELFEXT (dB/100m)	Impedance (Ohms)
4	55.76	63.27	52.76	100±15
8	49.74	58.75	46.74	
10	47.80	57.30	44.80	
16	43.72	54.24	40.72	
20	41.78	52.78	38.78	
31.5	37.90	49.88	34.90	
62.5	31.88	45.36	28.88	
100	27.80	42.30	24.80	
200	21.80	37.80	18.80	
300	18.30	35.1	15.30	
500	13.80	31.8	10.80	

CABLE CONSTRUCTION

Conductor	Material	SOLID Bare Copper
	Nom.O.D (mm)	0.53 ± 0.008mm. 23 & 24AWG
Insulation	Material	Solid PE
Insulation Diam. ø		1.07 ± 0.02mm
Thickness		AVG: 0.27mm, MIN: 0.26mm
Each Pair is Twisted	Polyester	Yes
	Filler	Yes
	Drain Wire	0.4 TC
	AL Foil	Thick: 0.050mm, extent: 23mm
	Rip cord	Yes
Jacket PE-RoHS	Thickness	AVG: 0.65mm ± 0.05mm
	Outer Diam.ø	7.2 ± 0.30mm
	Jacket Color (standard)	Black: RAL 9011 ●
Code Color	1 White/Blue	2 White/Orange
	3 White/Green	4 White/Brown
Dimension - Weight	37x37x26cm - 58Kg/Km	
Packing	1 Wooden Drum	
Packing Length	305/1500 ± 10m	

CHARACTERISTICS

Max. Conductor DC Resistance at 20°C (Ω/Km)	< 93.8
Rated Temperature (°C)	75
Rated Voltage (V)	300V
Velocity Ratio	65%

Ideal Technology has a policy of continuous improvement. Specifications are subject to change without notice.