

## 110 Patch Cords

### ◎ Basic Features:

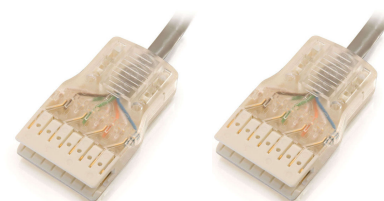
- ☆ Using stranded 24/26 AWG patch cables for cord assembly.
- ☆ Cord length available in 1m to 15m for selection.
- ☆ Connector Types: 110 connectors or RJ45 8 port plugs.
- ☆ One end terminated with gold plated RJ 45 plug and another end terminated with 110 connector.
- ☆ Outer Jacket: PVC,LSZH.
- ☆ Applicable Standards: ANSI/TIA/EIA-568B , ISO/IEC 11801Cat5e/Cat6 Standard. ☆ Cord Colors: White, Grey.
- ☆ Used to connect the network card to the hub or switch.



110 to RJ45 Patch Cord

### ◎ Technical Parameters:

- ☆ Can accommodate RJ45 jacks.
- ☆ Impedance:  $100\Omega \pm 15\%$
- ☆ Number of Termination pairs: 1- 4 Pairs
- ☆ Minimum Insertion Life Cycle: 1,000 cycles
- ☆ Minimum Plug Retention Force: 30 lbs



110 to 110 Patch Cord

### ◎ Product Highlights:

- ☆ Every patch cord is individually tested for NEXT and return loss, complying to TIA/EIA-568B, ISO/IEC 11801 standard for component testing.
- ☆ With a patented technology, all twists are maintained within 1/2", improving the NEXT value to a great extent.
- ☆ Durable jack design features to be corrosion resistant, heat resistant and not to be easily contaminated.
- ☆ Using stranded patch cables for higher flexibility and better bending radius, complying to EIA/TIA 606 standard.

### ◎ Ordering Information:

Part No.	Description
CAU54P1	CAT 5e UTP 4 Pairs, 1 Meter, 110 to RJ45
CAU54P3	CAT 5e UTP 4 Pairs, 3 Meter, 110 to RJ45
CAU54P5	CAT 5e UTP 4 Pairs, 5 Meter, 110 to RJ45
CA11041	CAT 5e UTP 4 Pairs, 1 Meter, 110 to 110
CA11043	CAT 5e UTP 4 Pairs, 3 Meter, 110 to 110
CA11045	CAT 5e UTP 4 Pairs, 5 Meter, 110 to 110
CAU64P1	CAT 6 UTP 4 Pairs, 1 Meter, 110 to RJ45
CAU64P3	CAT 6 UTP 4 Pairs, 3 Meter, 110 to RJ45
CAU64P5	CAT 6 UTP 4 Pairs, 5 Meter, 110 to RJ45
CA611041	CAT 6 UTP 4 Pairs, 1 Meter, 110 to 110
CA611043	CAT 6 UTP 4 Pairs, 3 Meter, 110 to 110
CA611045	CAT 6 UTP 4 Pairs, 5 Meter, 110 to 110