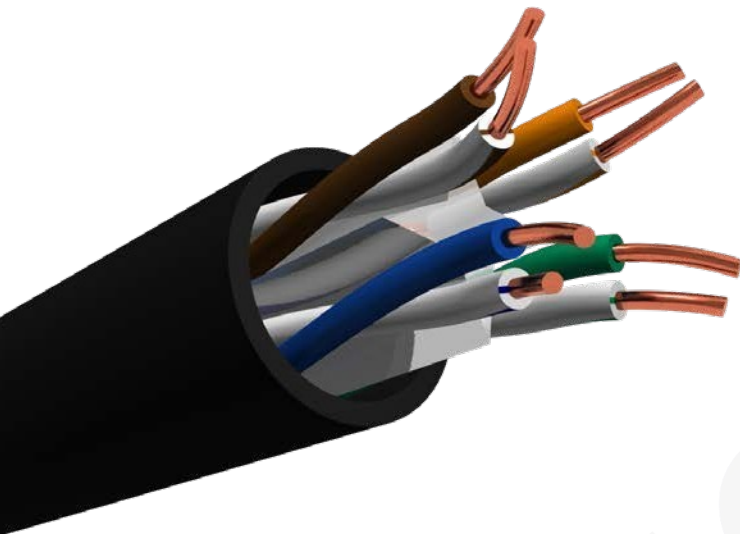


Cable Cat. 6A U/UTP CU PE rígido exterior negro CPR Fca



PRODUCT DESCRIPTION

• Standard Reference:

ISO/IEC 11801:2011
IEC 61156-5:2012
EN 13501-6
EN 50173-1:2011
EN 50173-2:2007 including amendment A1:2010
EN 50288-9-1:2012
EN 50288-4
EN 50575:2014+A1:2016
EN 60332-1[1,2], 60332-3C, 60754-[1,2], 61034-[1,2]
ANSI/TIA-568-6-2:2009

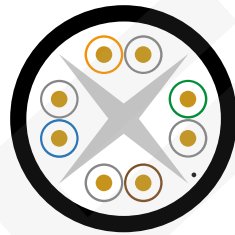
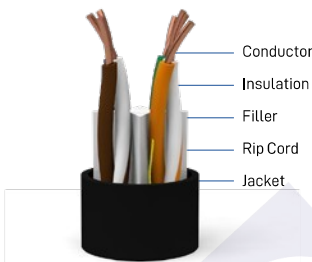
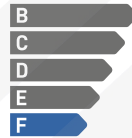
• Rated temperature: 90°C

• Installation temperature:
-30°C~+50°C
• Rohs complied

Application:

VoIP, ISDN
Token, 100M TP-PDM
Analog and Data Video
TR-16 Active and Passive
115M/662m/1.2GATM
IEEE802.3: 100Base, 100Base-T,
1GBase-T, 10GBase-T.

CRP Class:



CABLE CONSTRUCTION

Conductor	Material	SOLID Bare Copper
	Nom.O.D (mm)	0,58 ± 0,005mm, 23AWG x 4P
Insulation	Material	HPDE
Insulation Diam. ø		1,16 ± 0,02mm
Thickness		AVG: 0,30mm, MIN: 0,29mm
Each Pair is Twisted and Unshielded	Filler	PE: 4.8 * 0.4
	Rip Cord	Yes
Jacket PE-RoHS	Thickness	AVG: 0,55mm ± 0,05mm
	Outer Diam.ø	6,0 ± 0,40mm
	Jacket Color (standard)	Black: RAL 9011 ●
Code Color	1 White/Blue	2 White/Orange
	3 White/Green	4 White/Brown
Dimension - Weight	37x37x26cm - 52Kg/Km	
Packing	1 Wooden Drum	
Packing Length	305/500 ± 1.0m	

TECHNICAL PERFORMANCE (100m)

Frequency (MHz)	RL(dB) min.	Attenuation (dB/100m) max.	NEXT (dB/100m)	ACR (dB)
4	23.0	3.7	65.27	40.00
8	24.5	5.2	60.75	40.00
10	25.0	5.9	59.30	40.00
16	25.0	7.4	56.24	37.96
20	25.0	8.3	54.78	36.99
31.5	23.6	10.5	51.88	35.05
62.5	21.5	14.9	47.36	32.04
100	20.1	19.0	44.30	30.00
200	18.0	27.5	39.78	27.0
300	16.8	34.2	37.14	25.2
500	15.2	45.3	33.82	23.0
Frequency (MHz)	PSNEXT (dB/100m)	ELFEXT (dB/100m)	PSELFEXT (dB/100m)	Impedance (Ohms)
4	63.3	55.8	52.8	100±15
8	58.8	49.7	46.7	
10	57.3	47.8	44.8	
16	54.2	43.7	40.7	
20	52.8	41.8	38.8	
31.5	49.8	37.8	34.8	
62.5	45.4	31.9	28.9	
100	42.3	27.8	24.8	
200	37.8	21.8	18.8	
300	35.1	18.3	15.3	
500	31.8	13.8	10.8	

CHARACTERISTICS

Max. Conductor DC Resistance at 20°C (Ω/Km)	<93.8
Rated Temperature (°C)	75
Rated Voltage (V)	300V
Velocity Ratio	65%

Ideal Technology has a policy of continuous improvement. Specifications are subject to change without notice.