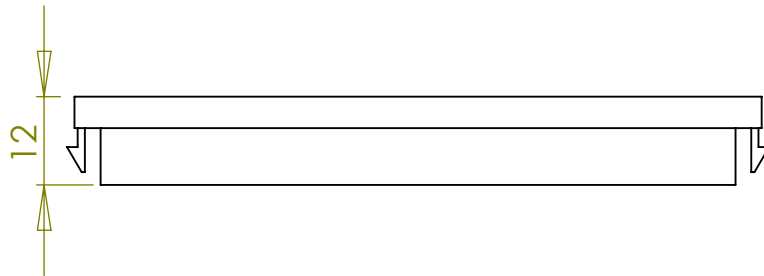


**Placa Doble 2 Huecos de 45 x 45  
Ref.E8005**

Plastico Auto Extinguible V0.  
Cumple la normativa UL 94.  
Color del plastico Blanco RAL 9003



		UNLESS OTHERWISE SPECIFIED:		NAME	DATE				
		DIMENSIONS ARE IN INCHES TOLERANCES: FRACTIONAL ± ANGULAR: MACH ± BEND ± TWO PLACE DECIMAL ± THREE PLACE DECIMAL ±		DRAWN	Carlos Gomez	02-09-2008	Placa doble 2 Huecos de 45 x 45 Ref.E8005		
		INTERPRET GEOMETRIC TOLERANCING PER:							
		MATERIAL : ABS V0 auto extinguibles clase según norma UL 94, libres de halógenos FINISH					SIZE	DWG. NO.	REV
NEXT ASSY		USED ON					<b>A</b>		
APPLICATION		DO NOT SCALE DRAWING						SCALE: 1:2	WEIGHT:

5

4

3

2

1