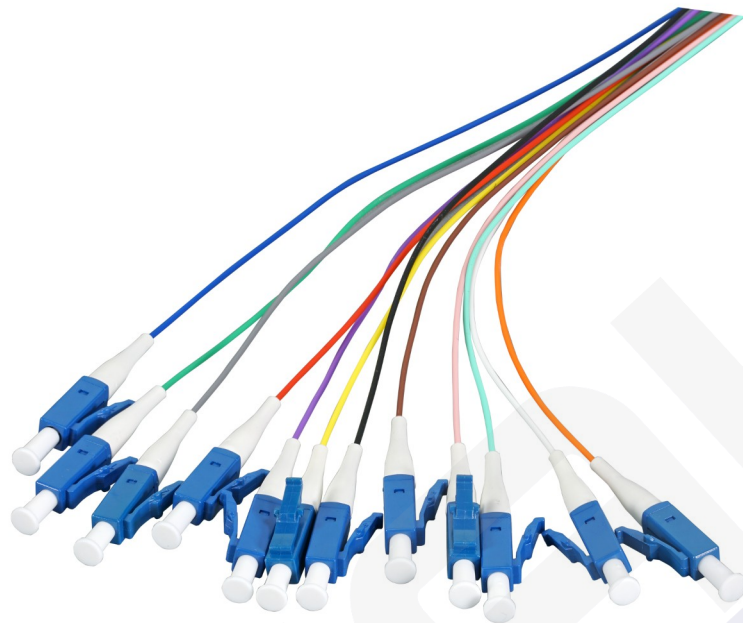


Pigtail LC OS2 G657A2 juego de 12 colores, 12 piezas



General data

The LC fiber pigtail set consists of 12 pigtails. The 12 pigtails are coloured according to colour code DIN VDE 0888 red, green, blue, yellow, white, grey, brown, violet, turquoise, black, orange and pink. The colour of the 900 μ jacket is equal to the colour of the 250 μ jacket. All 12 pigtails are packed in a polybag. Each connector is packed separately for an easy remove of each pigtail. Every PU contains an individual measuring protocol.

Allgemeine Daten

| | |
|-----------------------|----------------------------|
| Core type | Semi tight |
| Outer Diameter | 0.9 mm |
| Colour Code | VDE-0888 |
| Insertion loss 1310nm | < 0.3 dB |
| Anti-kink sleeve | Put-on |
| APC-version | False |
| Connector Colour | blue |
| Jacket Material | LSZH |
| Colour | DIN-Colorcode |
| Type | Conductor pigtail |
| Category | G657A2 acc. to ITU-T G.657 |
| Type of connector | LC |
| Bend optimized fiber | yes |

Mechanische Eigenschaften

| | |
|-------------------------------|-------|
| Max. Tension | 3 N |
| Mion. Bending Radius Static | 9 mm |
| Minimaler Biegeradius Dynamic | 18 mm |

Ideal Technology has a policy of continuous improvement. Specifications are subject to change without notice.

Pigtail LC OS2 G657A2 juego de 12 colores, 12 piezas

Kabelaufbau

| | |
|------------|-------------------|
| Fibre type | Single mode 9/125 |
|------------|-------------------|

Abmessungen

| | |
|--------|-------|
| Length | 2.0 m |
|--------|-------|

Umgebungsbedingungen

| | |
|-----------------------|-------------|
| Operating Temperature | -20 - 70 °C |
|-----------------------|-------------|

Übertragungstechnische Eigenschaften

| | |
|--------------------------|----------------------|
| Quality class singlemode | B/2 acc. IEC 61753-1 |
|--------------------------|----------------------|

Normen, Zulassungen, Zertifizierungen

| | |
|-------------------------------|-------------|
| Connector Conform to Standard | IEC61754-20 |
|-------------------------------|-------------|

| | |
|---------------------------|------------|
| Cable Conform to Standard | IEC60793-2 |
|---------------------------|------------|

Drawings

