

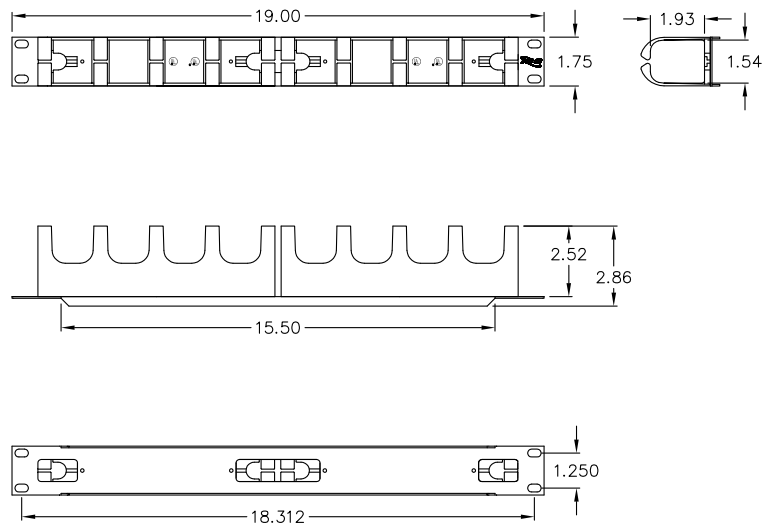
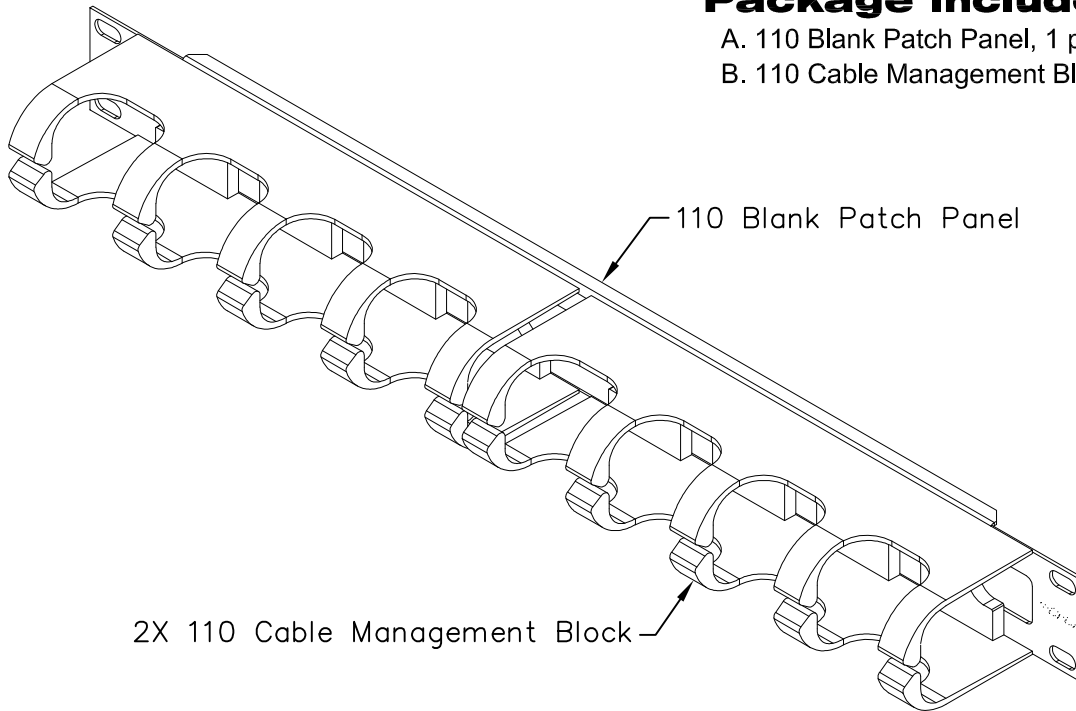
## DATASHEET

# Cable Management

PAS06

### Package includes:

- A. 110 Blank Patch Panel, 1 pc
- B. 110 Cable Management Block, 2 pcs



### Features and Benefits:

- Rack mounted reinforced steel panel with two 110 cable management blocks
- Designed with rear cable entry for flexibility
- Designed to fit all standard 19" racks and cabinets
- 1 rack mount space (RMS)
- Used with 110 patch panels
- ANSI/TIA-568-C and UL 1863 compliant