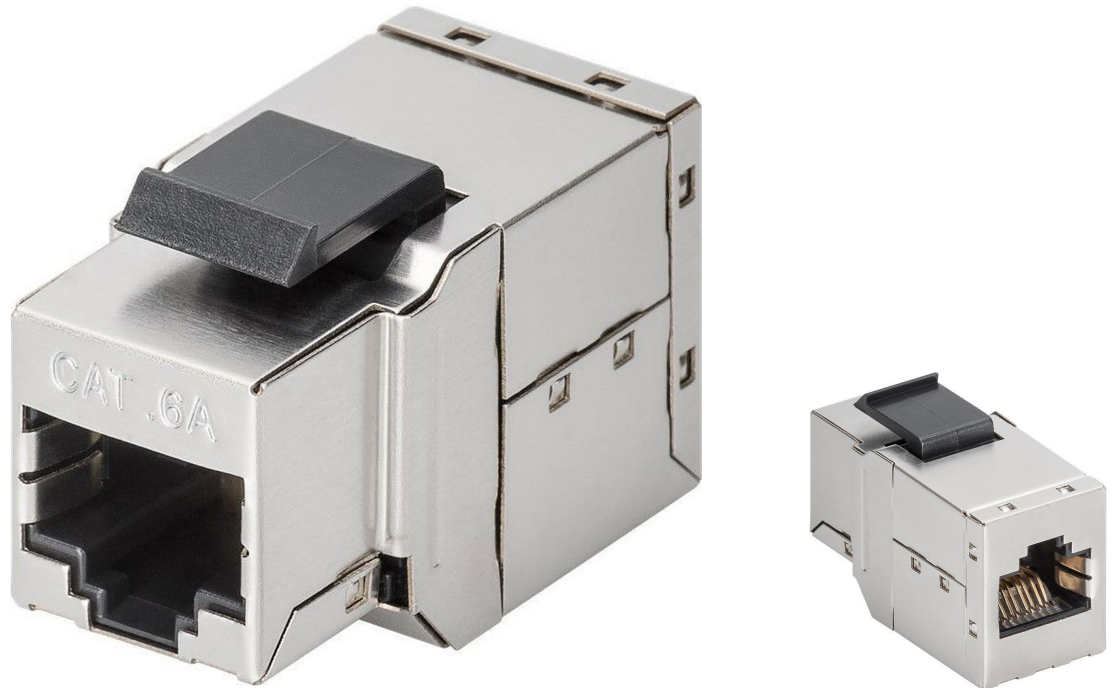


## Professional CAT 6 Class EA Modular Coupler, shielded

AD93906



### IDEAL CAT 6A modular coupler, shielded RJ45 to RJ45, snap-in panel mount

The modular couplers from IDEAL are shielded and provide best performance and link quality for your network. They are equipped with 2 RJ45 sockets with the assignment 1:1 and are therefore suitable for mounting in Patch Panels.

- 1 Transmission properties: Category 6A, Class EA
- 1 Area of application: Up to 500 MHz, 10GBase-T
- 1 Norms: ISO/IEC 11801 2nd Ed., EN 50173-1, EIA/TIA 568-C, 802.3af, 802.3at PoE+
- 1 General properties:
- 1 Suitable for 483 mm (19") cabinet mounting
- 1 2x RJ45 Female, 8P8C
- 1 360° shield coverage
- 1 Connection 1:1
- 1 Technical properties:
- 1 Housing material: Zinc die-cast, nickel-plated
- 1 RJ45 female material: ABS UL 94V-0
- 1 RJ45 female contact: Tinned phosphor bronze, 0.5 µ gold-plated contact
- 1 RJ45 shielding: Tinned bronze
- 1 Conductor plate: FR4, UL 94V-0
- 1 Physical properties:
- 1 Insertion force: 30N max. (IEC 60603-7-5)
- 1 Retention strength: 7.7 kg between jack and plug
- 1 Operation temperature: -20° C to +70 °C (ISO/IEC 11801, EN 50173-1, ANSI/TIA/EIA 568 C)
- 1 Mating cycles female: > 750 acc. to ISO/IEC 11801, IEC 60603-7-5
- 1 Clamp: > 200 acc. to ISO/IEC 11801, IEC 60603-7-5
- 1 IDC wire size: 22 – 26 AWG solid and stranded conductor
- 1 Insulation resistance: > 500 MOhm
- 1 Contact resistance: < 20 MilliOhm
- 1 Dielectric strength: 1000 VDC (Contact/Contact), 1500 VDC (Contact/Ground)