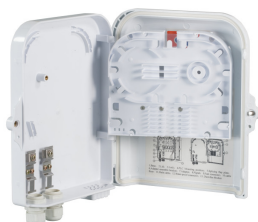
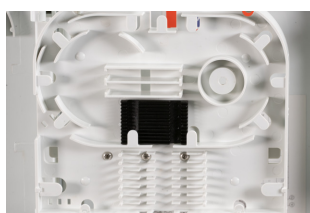


FTTH IP65 Connection box for 16 fiber, 8 adapter and Fiber overlength box



General data

Application:

Optical Telecommunication Networks
LAN, Optical fiber Communication Network
CATV Networks
FTTH access Network
PON, G-PON

Configuration in LC with duplex adapters for 16 ports/ fibers

Configuration in SC with simplex adapters for 8 ports/ fibers



Ideal Technology tiene una política de mejora continua. Las especificaciones están sujetas a cambios sin previo aviso.

FTTH IP65 Connection box for 16 fiber, 8 adapter and Fiber overlength box



Delivery unassembled (**Crimp splice holder (12 splices)**, shrink splice holder (max. 16 splices double layed), 8x shrink protection and material for wall mounting included)

Allgemeine Daten	
Max. Assembly (Adapter)	8
Cable entry with cable gland	2x PG13.5
Number of Fibres	16
Colour	white
With Fiber overlength cassette	True
Holder for splitter	True
Cable sheath support	True
Hinged splice cassette	True
Suitable for adapter	SC Simplex/LC Duplex/E2000®
Cable entry without cable gland	8x max. 3mm / 1x max. 9mm
Scope of application	Outdoor
Possibility of mast mounting	True
Mounting method	Wall mounting
Holder for gas blocker	False
Type of Splice protection	Crimp & Thermo

Mechanische Eigenschaften	
IP Protection	IP65
Water protection	Protection against jet water
Foreign body and contact protection	Protection against ingrees of dust

Abmessungen	
Dimension	213x163x47 mm

Umgebungsbedingungen	
Temperature range	-25 - 70 °C

Available variants		
ArtNr.	Bezeichnung	Access Control
CAE16	FTTH IP65 Connectionbox for 16fiber, 8adapter and Fiber overlength box	Special screw/ Seal



Ideal Technology tiene una política de mejora continua. Las especificaciones están sujetas a cambios sin previo aviso.