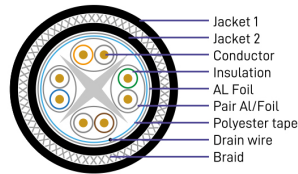
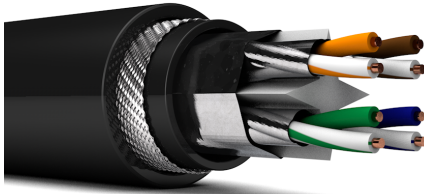


# Cable Cat. 6A FTP exterior CPR Fca



## Mains quality



Rodent Protected



UV Resistant

## Features



Underground



Duct

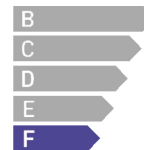
### • Standard Reference:

ISO/IEC 11801 :2011  
IEC 61156-5 :2012  
EN 13501-6  
EN 50173-1 :2011  
EN 50173-2 :2007 including amendment A1:2010  
EN 50288-9-1 :2012  
EN 50288-4  
EN 50575 :2014+A1:2016  
EN 60332-1[1,2], 60332-3C, 60754-[1,2], 61034-[1,2]  
ANSI/TIA-568-6-2 :2009

- **Rated temperature:** 90°C
- **Installation temperature:** -30°C~+50°C
- RoHS/REACH complied
- **DoP N°:** N/C

- **Application:**  
Token, 100M TP-PDM  
Analogue and Data Video  
TR-16 Active and Passive  
115M/662m/1.2GATM  
IEEE802.3: 100Base, 100Base-T, 1GBase-T, 10GBase-T.

## CPR Class



CABLE CONSTRUCTION		
Conductor	Material	SOLID Bare Copper
	Nom.O.D (mm)	0.55 ± 0.01mm, 23AWGx4P
Insulation	Material	Solid PE
Insulation Diam. ø		1.14 ± 0.02mm
Thickness		AVG: 0.295mm MIN: 0.30mm
Twisted pair (4), Unshielded	Polyester	Yes
	Filler	Yes
	AL foil	Yes
	Drain wire	0.4 STC
Jacket 1 (outer) PE	Thickness	AVG: 0.90mm ±0.80mm
	Outer Diam. ø	10mm
	Jacket Color (standard)	Black: RAL 9011 <span style="display: inline-block; width: 10px; height: 10px; background-color: black; border-radius: 50%;"></span>
Jacket 2 (inner) PE	Thickness	AVG: 0.5mm
	Outer Diam. ø	7.20±0.30mm
Armour Galvanized steel	Structure	16/3/0.20
	Coverage	90%
Code Color	1 White / Blue	2 White / Orange
	3 White / Green	4 White / Brown
Packing	1 Wooden drum	
Dimension-Weight	55x55x34cm - 128Kg/Km	
Packing Length	500 ± 1.0m	

TECHNICAL PERFORMANCE (100m)				
Frequency (MHz)	RL(dB) min.	Attenuation (dB/100m) max.	NEXT (dB/100m)	ACR (dB)
4	23.0	3.7	65.27	40.00
8	24.5	5.2	60.75	40.00
10	25.0	5.9	59.30	40.00
16	25.0	7.4	56.24	37.96
20	25.0	8.3	54.78	36.99
31.5	23.6	10.5	51.88	35.05
62.5	21.5	14.9	47.36	32.04
100	20.1	19.0	44.30	30.00
200	18.0	27.5	39.78	27.0
300	16.8	34.2	37.14	25.2
500	15.2	45.3	33.82	23.0
Frequency (MHz)	PSNEXT (dB/100m)	ELFEXT (dB/100m)	PSELFEXT (dB/100m)	Impedance (Ohms)
4	63.3	55.8	52.8	100±15
8	58.8	49.7	46.7	
10	57.3	47.8	44.8	
16	54.2	43.7	40.7	
20	52.8	41.8	38.8	
31.5	49.9	37.8	34.8	
62.5	45.4	31.9	28.9	
100	42.3	27.8	24.8	
200	37.8	21.8	18.8	
300	35.1	18.3	15.3	
500	31.8	13.8	10.8	

CHARACTERISTICS	
Max. Conductor DC Resistance at 20°C (Ω/Km)	<93.8
Velocity ratio	65%

Ideal Technology has a policy of continuous improvement. Specifications are subject to change without notice.