

TECHNICAL DATA

Electrical data

Impedance 50Ω
 Frequency range 0~3GHz
 Withstand Voltage 500V rms
 VSWR
 Straight ≤1.15
 Righth Angle ≤1.25
 Contact resistance
 -center contact ≤1mΩ
 -outer contact ≤1mΩ
 Insulation resistance ≥5000MΩ

Mechanical data

Temperature range -65°C~+165°C
 Durability(matings) >500

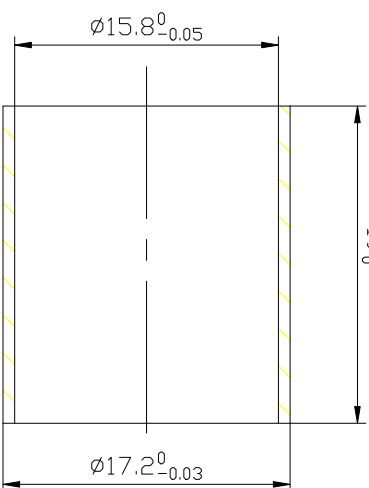
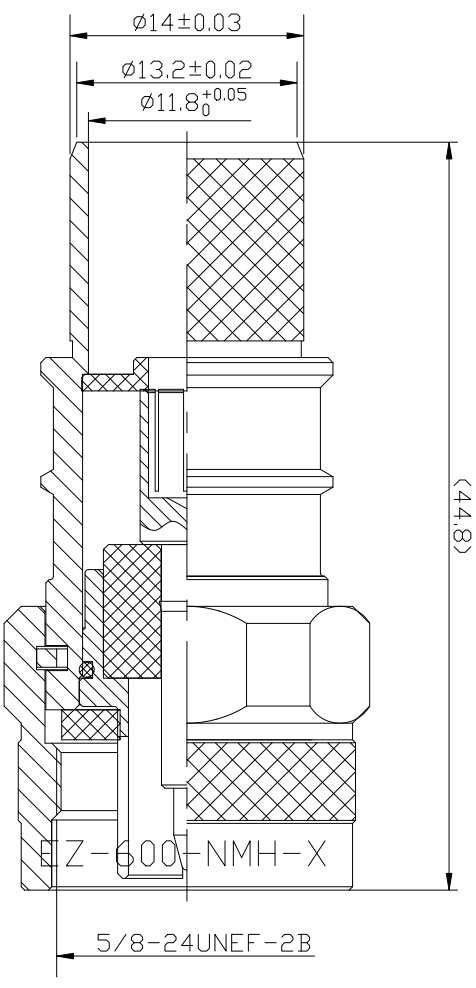
Material data

Piece Part	Base Material	Plating
Body	Brass	Tri-Metal Plated
Center conductor	Brass	Gold plated
Crimping suite	Copper alloy	Nickel plated
O-ring sealing	6146 silastic	
Insulator	PTFE	

Interface Standards

IEC 60169-16 /MIL-C-39012/CECC22210

REV	DESCRIPTION OF REVISION	ECN No.	BY	DATE	APPROVED
R/01	N/A	N/A		2019/05/19	



NOTES:

1.ALL SPECIFICATIONS ARE SUBJECT TO CHANGE WITHOUT NOTICE AT ANY TIME
 2.CUSTOMER OUTLINE DRAWING FOR REFERENCE ONLY

Part Name: N Male for LMR600 cable				
---------------------------------------	--	--	--	--

Part Name: CN1134Q	SIZE: A4	SCALE: 4:1	SHEET: 1/1	REV: A
-----------------------	-------------	---------------	---------------	-----------