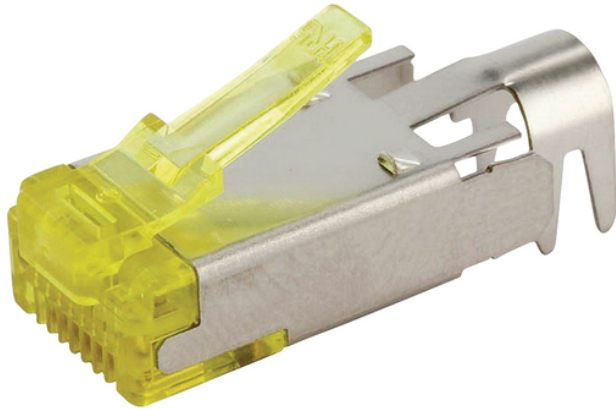


DATASHEET

RJ45 Hirose Connector Set STP, TM31 Cat.6A black



HRS HIROSE
ELECTRIC
GMBH

Cat.6A

Description

Channel Class EA up to 500 MHz (Cat.6A)
 For stranded wires (AWG 24/7, AWG 26/7, AWG 27/7)
 Shielded version
 Core insulation about 0.9 - 1.0 mm
 Cable diameter max. 6.6 mm
 The set consists of RJ plug, anti-kink sleeve and guide plate
 Suitable crimping tool DCW1002 + DCW1002.1

General data

Category	6A (TIA)
Model	jack (jack)
Connection type	crimp
Type of connector	RJ45 8(8)
Screened	True
AWG-range for litz wire conductor	24 - 27
Special tool necessary	True
Suitable for round cable	True
Suitable for flat cable	False
Suitable for litz wire conductor	True
Suitable for solid core	False

Available variants

Article no.	Title
CNTM31	RJ45-Hirose Connector TM31, 1 pcs., Cat.6A

Ideal Technology has a policy of continuous improvement. Specifications are subject to change without notice.

DATASHEET

RJ45 Hirose Connector Set STP, TM31 Cat.6A black

accessory

DCW1002.1	Die inserts for DCW1002 Crimping Tool
DCW1002	Crimping tool for exchangeable die inserts (DCW1002.x)
HRRJC6H	Crimping Tool for RJ45 Hirose TM11/21/31 Plug